

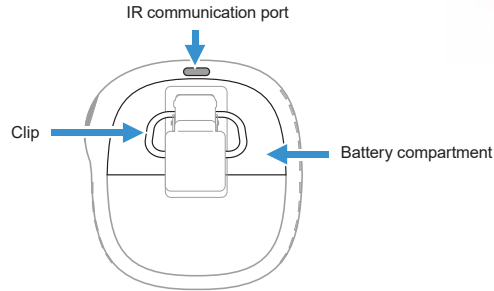
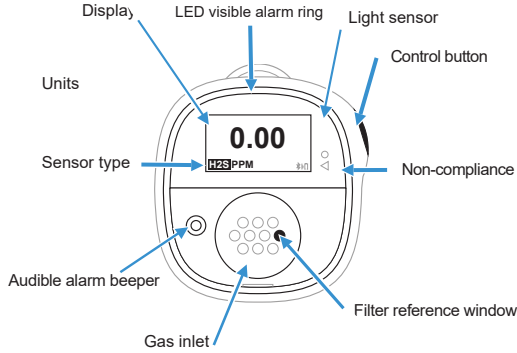
Honeywell BW™ Solo

Portable Single gas Detector

Quick Reference Guide



Overview



Bump Test/Configuration

Common device's operations

Power On	5-second hold
Power Off	5-second hold
Enter Menus	Double-click
Select Next	Single-click
Initiate Selected	Long Hold

IMPORTANT: Read the User Guide for complete information on the BW Solo operation.

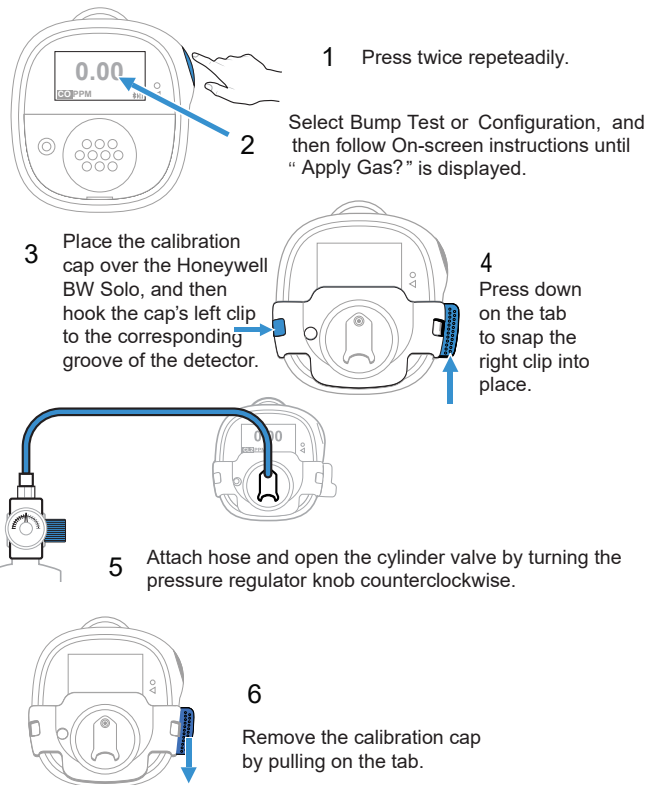
⚠️ WARNINGS

- For safety reasons, this equipment must be operated and serviced by qualified personnel only.
- Read and understand the instruction manual completely before operating or servicing.
- Substitution of components may impact safety.
- Lithium battery: Only use approved battery: 2/3AA 3.6V 1.65Ah Lithium battery

(P/N: 500-0160-000).

⚠️ CAUTION

- To reduce the risk of electric shock, turn the power off before opening this instrument or performing service.
- Never operate the instrument when the instrument is open.
- Service this product only in an area known to be non-hazardous.
- Recycling: this instrument contains a lithium battery. Do not mix with the solid waste stream. Spent batteries should be disposed of by a qualified recycler or hazardous materials handler.
- This device complies with Part 15 of the FCC Rules / Industry Canada license-exempt RSS standard(s). Operation is subject to the following two conditions:
 - (1) this device may not cause harmful interference, and
 - (2) this device must accept any interference received, including interference that may cause undesired operation.



Safety Certifications

North America
 Class I, Division 1, Groups A,B,C,D T4
 Class I, Zone 0, AEx/Ex ia IIC T4 Ga -40°Cs Tamb ≤ 60°C
 ATEX: Sira 18ATEX2243, CE 2460 II 1G Ex ia IIC T4 Ga
 I M1 Ex ia I Ma -40°Cs Tamb ≤ 60°C
 IECEx: IECEx SIR 18.0058
 Ex ia IIC T4 Ga / Ex ia I Ma -40°Cs Tamb ≤ 60°C

Wireless Approvals

FCC ID: SU3BWS1
 IC: 20969-BWS1
 RED: RE-D Directive 2014/53/EU

IP Rating

IP66; IP68 1.2 meters for 45 minutes